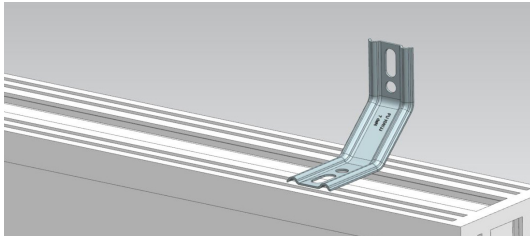


Montageanleitung SARGO

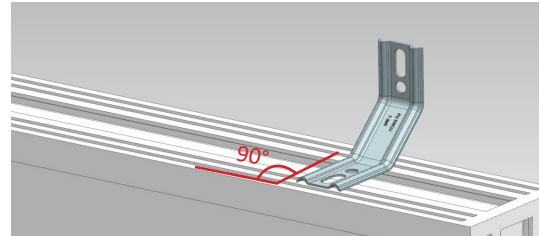
Schritt 1 - Ansetzen

SARGO auf dem Fensterprofil ansetzen



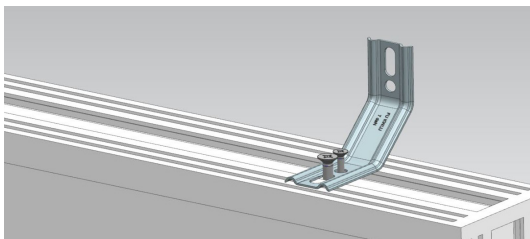
Schritt 2 - Ausrichten

Im 90° Winkel zum Fensterprofil ausrichten



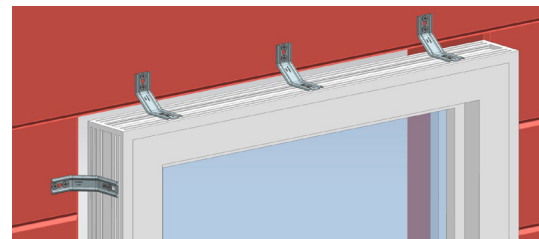
Schritt 3 - Verschrauben

SARGO mittels geeigneter Fensterbauschraube am Fensterprofil verschrauben



Schritt 4 - Fensterrahmen einsetzen

Fensterrahmen einsetzen, ausrichten und mittels passender Fensterbauschraube im Mauerwerk fixieren

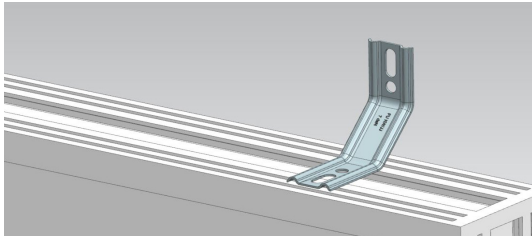


Hinweis: Das Gewicht des Fensters muss durch entsprechende bauliche Maßnahmen / geeignete Konsolen oder Ähnliches (nicht im Lieferumfang enthalten) an der Fenster-Unterseite aufgenommen werden

Assembly instruction SARGO

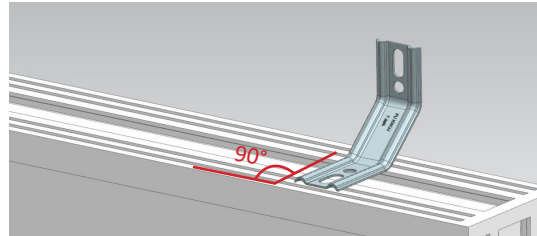
Step 1 - Place in position

Place in position SARGO at the window profile



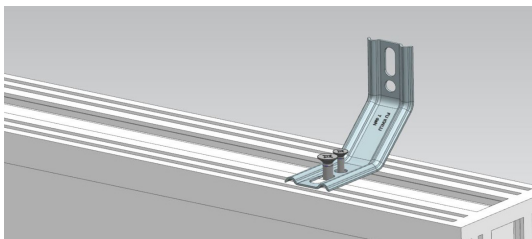
Step 2 - Align

Align at a 90° angle to the window profile



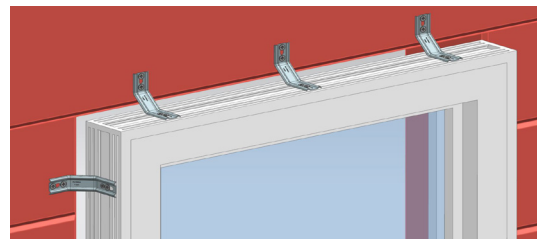
Step 3 - Screw on

Screw on SARGO, with suitable window screw at window profile



Step 4 - Insert window frame

Insert the window frame, align it and use suitable window screw to fix at the wall



Note: The weight of the window must be absorbed by appropriate structural measures / suitable brackets or similar (not included in the scope of delivery) on the underside of the window