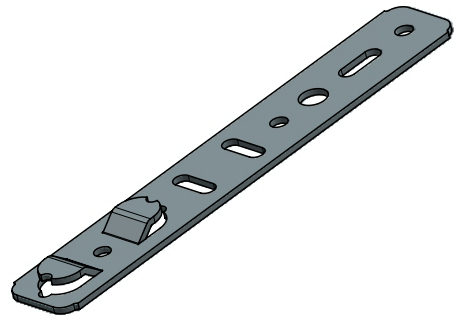


INVADI

Usage

- Stiff drop-in anchor, fitting for different PVC profiles
- Drilling through the window frame is not necessary
- Fastening of the plate in the wall with different screws possible



Product features

- The clamp can be easily screwed into the window profile
- Twisting of the plate is not possible
- Designed with one or two target bending points
- No hindrance in case of a thermally caused change in length of the window frame
- **Note:** The weight of the window must be absorbed by supporting and spacer blocks (not included in scope of delivery) on the underside of the window

Technical information

Material:	DX51D+Z140 M-A-C / Z275
Widths:	25 / 30 / 37,5 mm
Thickness:	2 mm
Lengths:	160 / 200 / 240 / 260 / 300 mm various special lengths upon request
Packaging:	box of 100, 150, 200, 250, 400 pieces