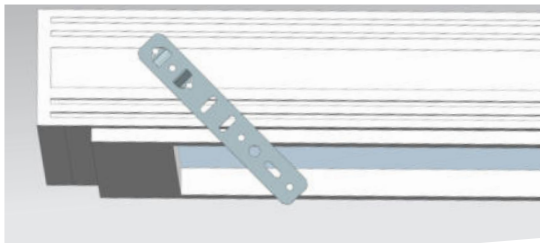


## Assembly instruction INVADI

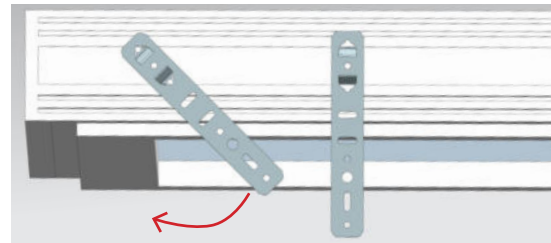
### Step 1 - Place in position

Place in position both claws of INVADI at an angle to the window profil



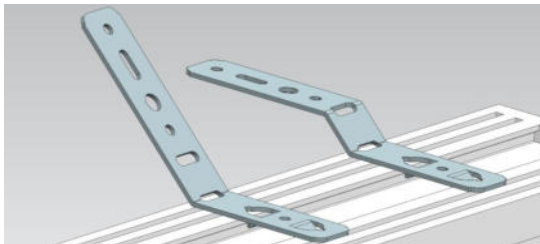
### Step 2 - Screw in

Screw in at a 90° angle to the window profile



### Step 3 - Bend

After screw in, the required offset high can be bent with target bending points (elongated holes)



### Step 4 - Insert window frame

Insert the window frame, align it and use suitable window screw to fix at the embrasure



**Note:** The number of INVADI depends on the size of window - the distance between the INVADI may be a maximum of 700 mm for PVC windows. The weight of the window must be absorbed by supporting and spacer blocks (not included in scope of delivery) at the underside of the window.