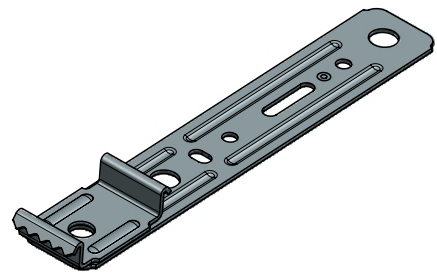


ENBATI

Usage

- Rotatable drop-in anchor, fitting for different PVC profiles
- Drilling through the window frame is not necessary
- Fastening of the plate in the wall with different screws possible



Product features

- The clamp can be easily driven into the window profile
- The fastening point in the wall can be freely positioned with the rotatable plate
- Designed with one or two target bending points
- No hindrance in case of a thermally caused change in length of the window frame
- **Note:** The weight of the window must be absorbed by supporting and spacer blocks (not included in scope of delivery) on the underside of the window

Technical information

| | |
|-------------------|--|
| Material: | DX51D+Z140 M-A-C / Z275 |
| Width: | 25 mm |
| Thickness: | 1,25 oder 2 mm |
| Lengths: | 150 / 200 / 240 / 260 mm various special lengths upon request |
| Packaging: | box of 100, 150, 200, 250, 400 pieces |