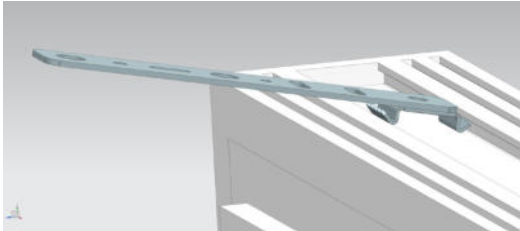


## Assembly instruction ENBATI

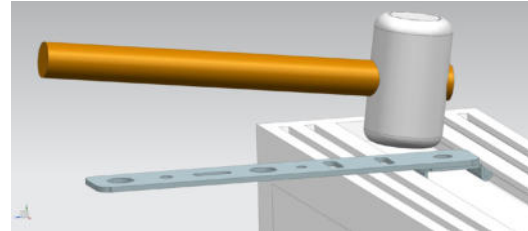
### Step 1 - Place in position

Place in position front part of ENBATI-claw at the window profil



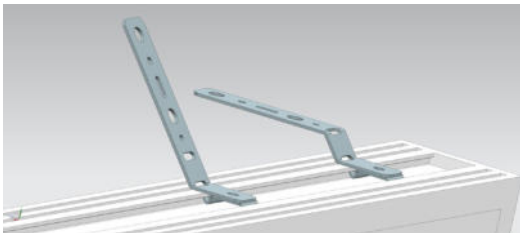
### Step 2 - Knock in

Use a Hammer to knock in claw at the window profile



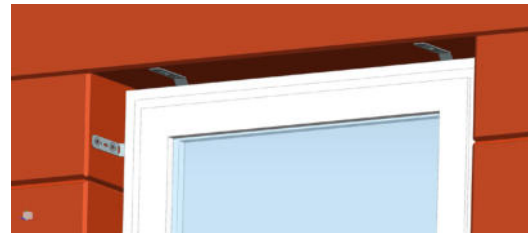
### Step 3 - Bend

After knock in, the required offset high can be bent with target bending points (elongated holes)



### Step 4 - Insert window frame

Insert the window frame, align it and use suitable window screw to fix at the embrasure



**Note:** The number of ENBATI depends on the size of window - the distance between the ENBATI may be a maximum of 700 mm for PVC windows. The weight of the window must be absorbed by supporting and spacer blocks (not included in scope of delivery) on the underside of the window.