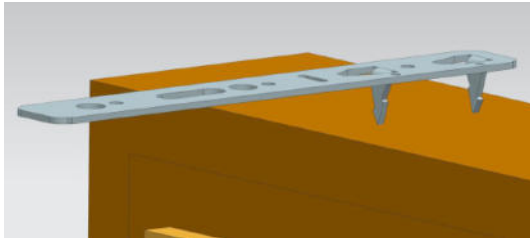


## Assembly instruction EFEKTO

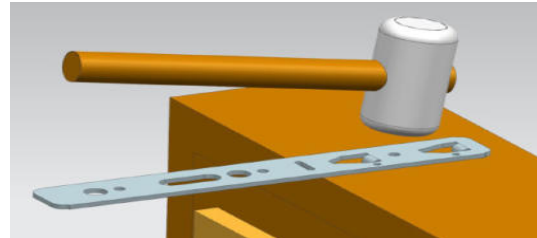
### Step 1 - Place in position

Place in position both claws of EFEKTO at the window frame



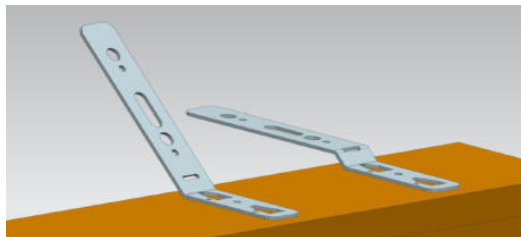
### Step 2 - Knock in

Use a Hammer to knock in claws at the window frame



### Step 3 - Bend

After knock in, the required offset high can be bent with target bending points (elongated holes)



### Step 4 - Insert window frame

Insert the window frame, align it and use suitable window screw to fix at the embrasure



**Note:** The weight of the window must be absorbed by supporting and spacer blocks (not included in scope of delivery) on the underside of the window